



#HorizonEU

**HORIZON EUROPE
POLICY SUPPORT
FACILITY**

2021 – 2027

**Mutual Learning Exercise:
Citizen Science initiatives
- Policy and Practice**

Research
and
Innovation



Aims

THE MUTUAL LEARNING EXERCISE ON CITIZEN SCIENCE

The main aim of the MLE has been to **identify and promote good practices, experience and lessons learned**, in addition to policies and programmes for Citizen Science among 11 participating countries.

The MLE therefore aims to **achieve greater societal impact** and **increase trust in science** through the leveraging of **collective societal capabilities and insights**, and

to **enlarge the scope and impact** of Research and Innovation through **increased societal relevance, responsiveness and transparency**.

HORIZON EUROPE

POLICY SUPPORT FACILITY

#HorizonEU



Eleven Participants



HORIZON EUROPE

POLICY SUPPORT FACILITY



Chair

Alan Irwin

Rapporteur

Margaret Gold (Rapporteur and Expert on Topic 4)

Independent Experts

Muki Haklay (Expert on Topic 1)

Rosa Arias (Expert on Topic 2)

Marzia Mazzonetto (Expert on Topic 3)

Antonella Radicchi (Expert on Topic 5)

Ingeborg Meijer (Support Rapporteur and Support Expert on Topic 4)

DG R&I Policy Officers

Annamaria Zonno (Policy Support Facility)
Annamaria.ZONNO@ec.europa.eu

Gabriella Leo (Open Science)
Gabriella.LEO@ec.europa.eu



Six Interactive Workshops

THE MUTUAL LEARNING EXERCISE ON CITIZEN SCIENCE



Five Core Topics

THE MUTUAL LEARNING EXERCISE ON CITIZEN SCIENCE

- 1: Introduction and overview on citizen science
- 2: Ensuring good practices and impacts
- 3: Maximising the relevance and excellence of citizen science
- 4: Enabling environments and sustaining citizen science
- 5: Scaling up citizen science



Repository of Outputs

THE MUTUAL LEARNING EXERCISE ON CITIZEN SCIENCE

<https://tinyurl.com/psfMLEcs>



The screenshot shows a webpage from the European Commission. The header includes the European Commission logo and a search bar. The main title is "Mutual Learning Exercise on Citizen Science Initiatives- Policy and Practice". Below the title, there is a paragraph of text and a table with two columns: "2021" and "2023". The table lists countries and their corresponding MLE types. Below the table, there is a section titled "Documents" with three items: "Citizen Science at the heart for research and innovation (Video)", "Summary article - mutual learning boosts citizen science across Europe", and "Final Report: Mutual Learning Exercise on Citizen Science Initiatives - Policy and Practice".

	2021	2023
PSF Geo coverage	Norway, France, Slovenia	Austria, Germany, Italy, Portugal, Sweden
PSF Exercise type		Challenge MLEs

Documents

- Citizen Science at the heart for research and innovation (Video)**
The Policy Support Facility Mutual Learning Exercise on Citizen Science brought together 11 countries to share the experiences. The exchanges included ensuring good practices and impacts, maximizing the relevance and excellence of citizen science, enabling environments and sustaining citizen science and scaling up citizen science.
[Watch video on Youtube](#)
- Summary article - mutual learning boosts citizen science across Europe**
The summary article presents key findings from the Mutual Learning Exercise on Citizen Science Initiatives. Over the course of 18 months, the expert panel worked on recommendations for building an enabling environment for supporting, sustaining and scaling up citizen science.
[Download article](#)
- Final Report: Mutual Learning Exercise on Citizen Science Initiatives - Policy and Practice**
This Final Report describes a strategic vision for Citizen Science at the national level based on the thematic topics discussed throughout the MLE and presents an approach to achieving those aims via 'backcasting'.

FINAL REPORT – BACKCASTING

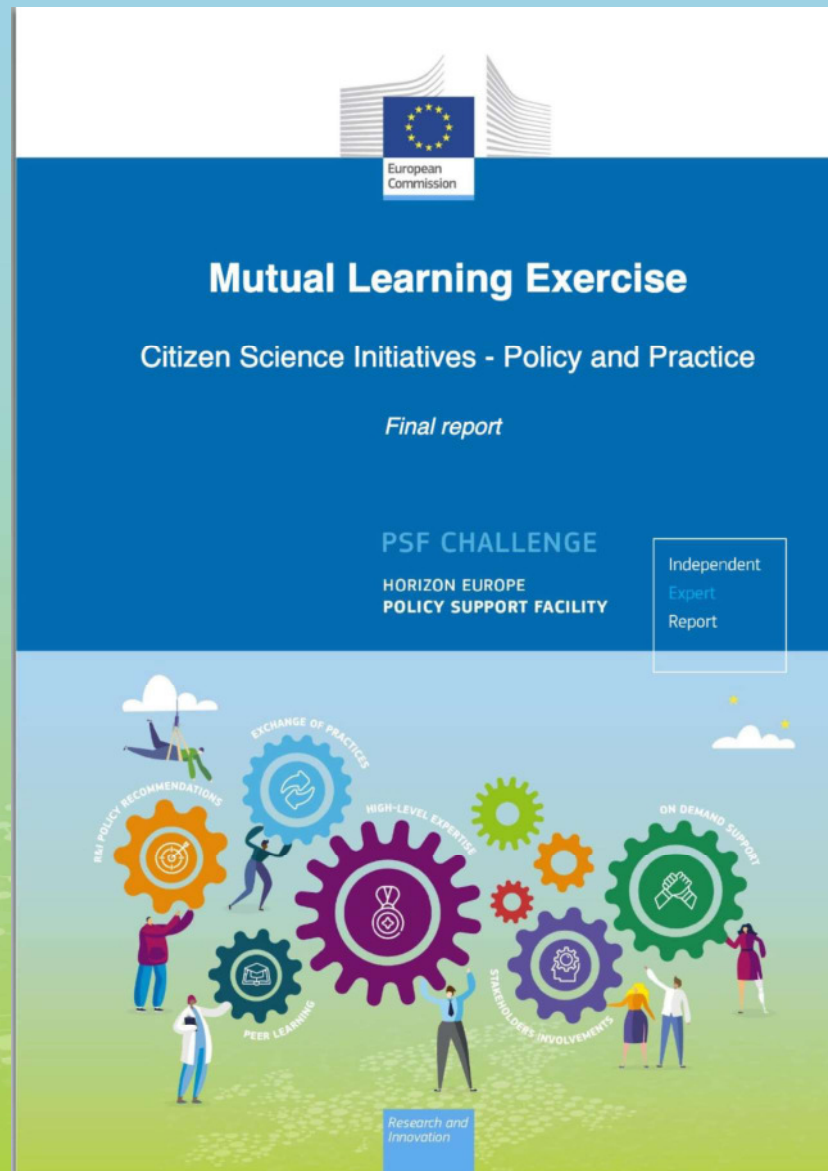
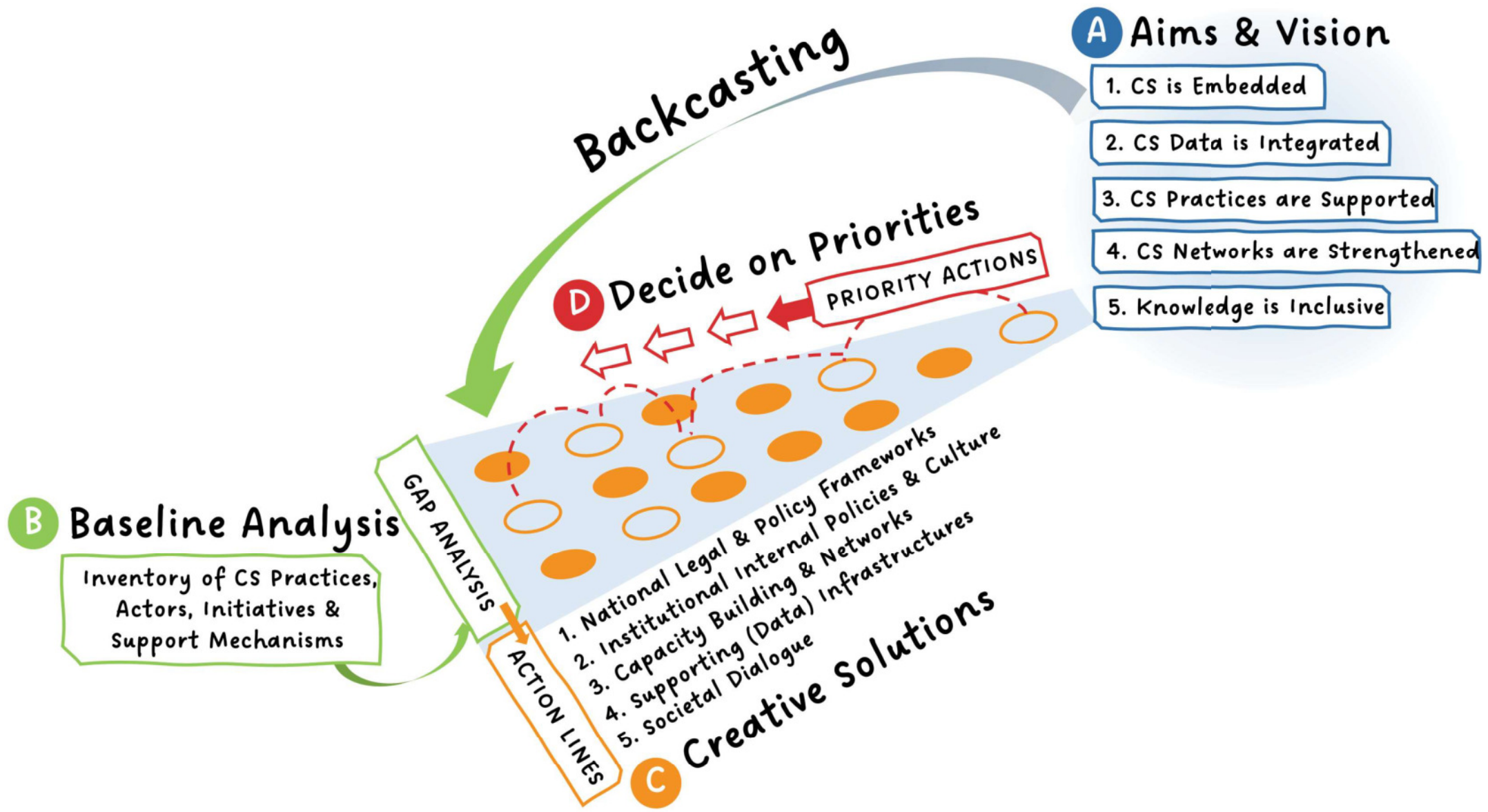


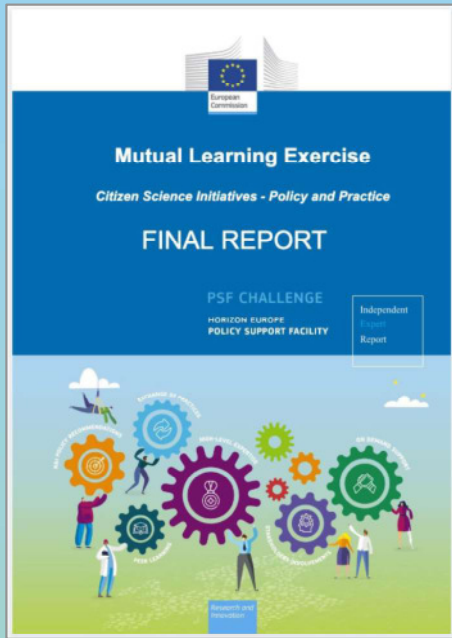
Table of Contents

ABSTRACT	5
1. Introduction	7
1.1. Achieving the Potential of Citizen Science at the National Level	10
1.2. Excellence in Citizen Science	10
2. The Mutual Learning Exercise on Citizen Science	13
2.1. The Modus Operandi of the MLE	14
2.2. Scope and Purpose of this Final MLE Report	16
2.3. The Backcasting Approach	17
2.4. The Enabling Factors for Citizen Science	18
3. Towards Citizen Science as a fully embedded Research Practice	20
3.1. Setting the Long-term Aims and Vision (Step A)	20
3.2. Performing a Baseline Analysis (Step B)	21
3.3. Identifying Actions towards the Strategic Aims (Step C)	23
3.4. Identifying the Actors and the 'Spheres of Influence' towards the Strategic Aims (Step C)	26
3.5. Deciding on the Priorities (Step D)	27
4. Developments in the participating countries during the MLE	28
APPENDIX: Summary of Recommendations towards achieving the Five Strategic Aims for Citizen Science	38



The Top 4

<https://tinyurl.com/MLEcsfinal>



1. Support & grow national networks of practitioners
2. Develop & provide dedicated funding instruments
3. Enable the required culture change
4. Invest in supportive infrastructure