



# **Access Statement**

OeAD Building in  
Universitätsstraße 5  
1010 Vienna

## Contents

1. Service chain.....	1
1.1. Contact information .....	3
1.2. How to get there by public transport.....	3
1.2.1. Travelling by tram lines 43 or 44 to Landesgerichtsstraße stop – approximately 140 meters on foot .....	3
1.2.2. Travelling by underground line U2 to Schottentor station – approximately 260 meters on foot .....	3
1.3. Travelling by car, parking, arrival .....	4
1.4. Entrance to the OeAD building, Universitätsstraße 5.....	4
1.5. Access, entrance to the OeAD building.....	5
1.6. Overview: OeAD building in Universitätsstraße 5.....	5
1.7. Entrance area on the ground floor.....	6
1.7.1. Access to the stairwell to the mezzanine floor and 1 <sup>st</sup> floor .....	7
1.7.1.1. Data regarding the hinged double door.....	7
1.7.2. Access to the lift to the mezzanine floor and the 1 <sup>st</sup> floor .....	7
1.7.2.1. Data regarding the non-accessible lift .....	8
1.8. Mezzanine floor with gallery and toilet .....	9
1.8.1. What can you find on the mezzanine floor?.....	9
1.8.1.1. Data regarding the door .....	9
1.8.2. Gallery .....	11
1.8.2.1. Information about the door to the gallery.....	11
1.8.3. Non-accessible toilet on the mezzanine floor .....	13
1.8.3.1. Data regarding the door to the toilet on the mezzanine floor .....	14
1.8.3.2. Data regarding the toilet on the mezzanine floor.....	14
1.9. First floor with reception, library and non-accessible toilet.....	14
1.9.1. What can be found on the first floor .....	14
1.9.1.1. Information about the hinged door .....	14
1.9.2. Reception on the first floor.....	15
1.9.3. Library on the 1 <sup>st</sup> floor .....	16

1.9.4.	Toilet on the 1 <sup>st</sup> floor .....	17
1.9.4.1.	Data regarding the non-accessible toilet on the first floor.....	18
1.10.	Escape routes .....	18
1.11.	Additional information .....	18
1.12.	Details.....	18

## 1. Service chain



[www.oead.at](http://www.oead.at)

The service chain serves as mental aid for the OeAD's publicly accessible offers for events and counselling sessions.

The service chain describes the services offered by the OeAD, from first information, how to get to the OeAD, and what is offered on the premises of the OeAD.

The OeAD service chain includes the following elements:

- + Contact Information
- + How to get there
- + Entrance
- + Lifts
- + Mezzanine: gallery, toilet
- + 1<sup>st</sup> floor: reception, library, toilet
- + Escape routes

In the following chapters the elements of the service chain will be described in detail.

These descriptions are to help you to assess whether or not you can use the OeAD's services.

## 1.1. Contact information

The contact person for questions regarding accessibility at the OeAD is Florian Gerhardus [florian.gerhardus@oead.at](mailto:florian.gerhardus@oead.at), telephone number +43 1 53408-258.

Address: Universitätsstraße 5/1<sup>st</sup> floor in 1010 Vienna

The OeAD's reception staff provide on-site support. If you need support, call +43 1 53408-994 or +43 1 53408-0.

For further information see [www.oead.at/en/accessibility-statement](http://www.oead.at/en/accessibility-statement)

## 1.2. How to get there by public transport

### 1.2.1. Travelling by tram lines 43 or 44 to Landesgerichtsstraße stop – approximately 140 meters on foot

Take tram 43 or 44 to Landesgerichtsstraße stop. Cross Universitätsstraße (traffic lights with signal) and turn slightly left to Ebendorferstraße. Cross Ebendorferstraße and walk along Universitätsstraße until you get to number 5.

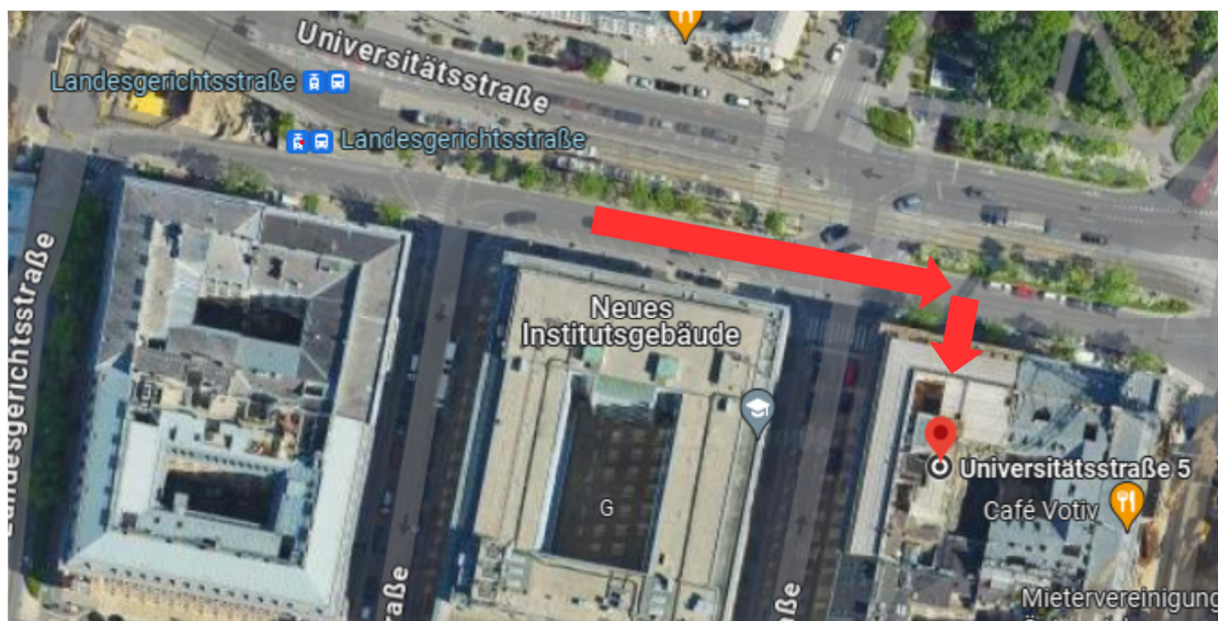


Figure 1: Walking route from the tram stop Landesgerichtsstraße to the OeAD building in Universitätsstraße 5.

### 1.2.2. Travelling by underground line U2 to Schottentor station – approximately 260 meters on foot

You can get to Schottentor station by the tram lines 1, 71, D, 37, 38, 40 or 41, underground line U2 or bus 1A. Take the University exit ("Universität") (lift available). At the exit of the lift there is a stop for the tram lines 43 and 44. For a description see the paragraph above at 1.2.1. regarding Landesgerichtsstraße stop.

You can also walk from there: From the exit of the lift walk straight ahead to the University of Vienna building. Turn left and walk along Universitätsstraße until you get to number 5.



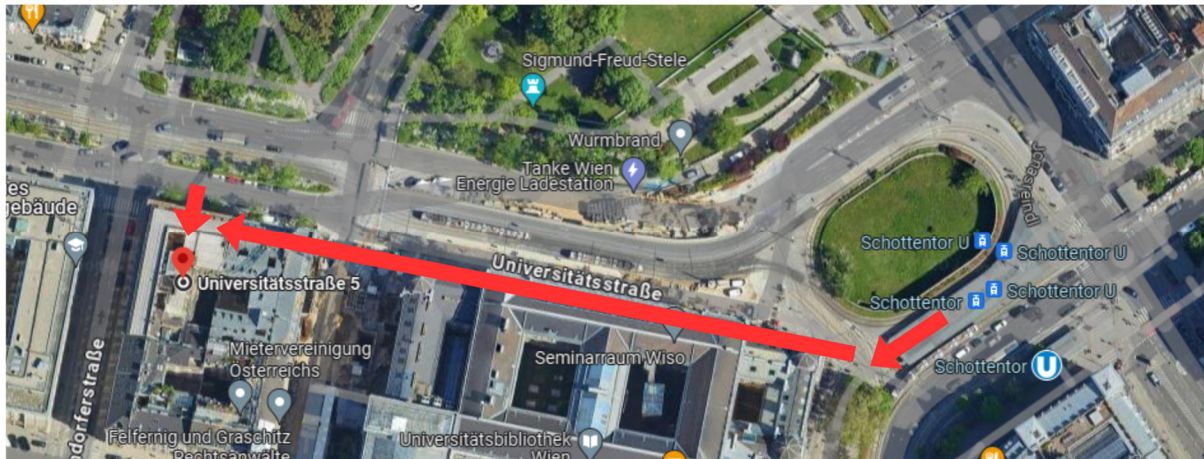


Figure 2: Walking route from the U2 underground station Schottentor to the OeAD building in Universitätsstraße 5.

### 1.3. Travelling by car, parking, arrival

The OeAD's Universitätsstraße 5 location is in the city of Vienna's fee-paying short-stay parking area (weekdays from 9 a.m. to 10 p.m.).

There are no customer parking spaces in front of the OeAD building. Near the OeAD building, in Grillparzerstraße and Liebiggasse, there are public parking spaces that are not restricted to residents.

### 1.4. Entrance to the OeAD building, Universitätsstraße 5

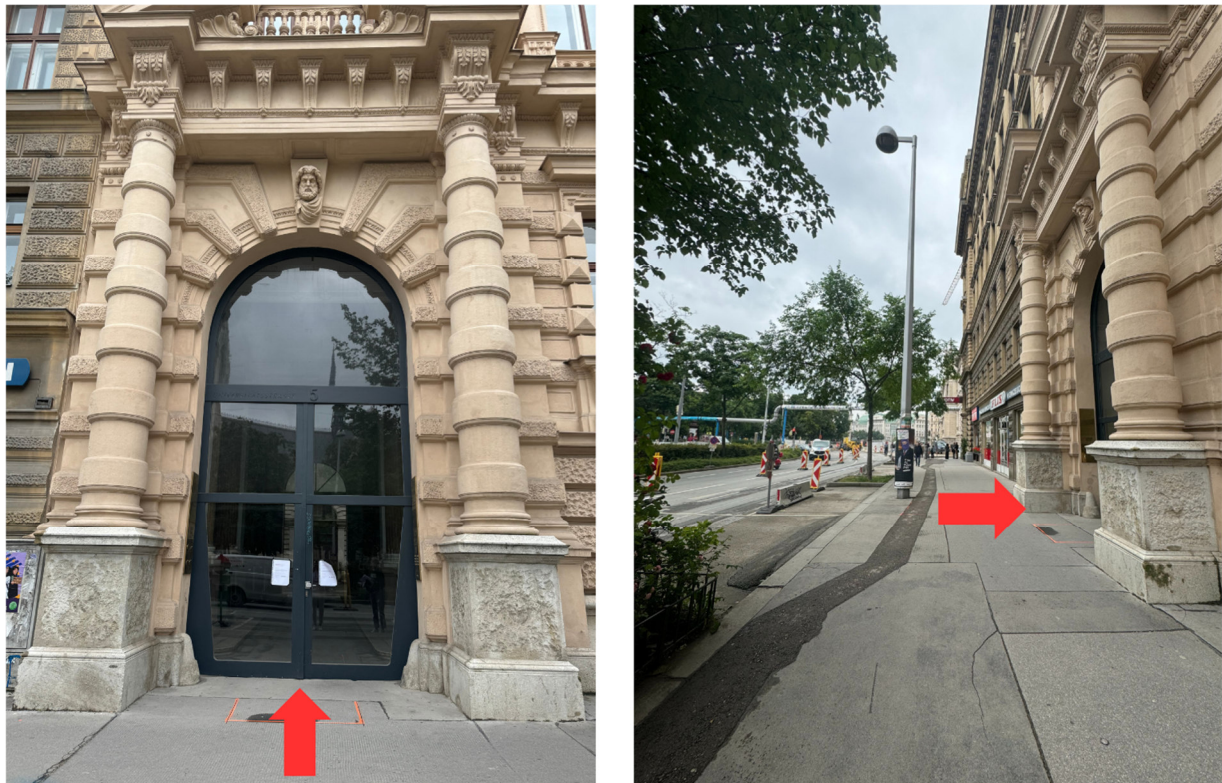


Figure 3: Entrance to the OeAD building in Universitätsstraße 5

The way from the surrounding public parking spaces to the entrance of the OeAD building is level with a paved pavement. There is a ramp (see picture 4). The roadway of

Universitätsstraße 5 is directly connected to the pavement in front of the OeAD's entrance door. There is no tactile guidance system to the main entrance.



Figure 4: OeAD entrance Universitätsstraße 5 in Vienna

## 1.5. Access, entrance to the OeAD building

During opening hours you enter the OeAD building via an open glass door. It is 1 m 59 cm wide. The entrance is level. Still outside the glass door on the wall on the right there is a call button with an intercom. If you need assistance, please press the button. You will then be connected to the reception staff during opening hours. The reception desk of the OeAD building in Universitätsstraße 5 is staffed Mondays to Fridays from 9 a.m. to 12 noon. Should you need assistance outside these times you can contact the reception desk of the OeAD building in Ebendorferstraße 7. It is available Mondays to Thursdays from 8 a.m. to 5 p.m. and on Fridays from 8 a.m. to 4 p.m. To reach the OeAD's reception by telephone call +43 1 53408-0.

## 1.6. Overview: OeAD building in Universitätsstraße 5

The entrance area is located on the ground floor. From there you can reach all floors of the building.

The gallery and a non-accessible toilet are located on the mezzanine floor.

The reception, the library and a non-accessible toilet are located on the first floor.

In the following chapters you will find a detailed description of the different parts of the building and their accessibility.



## 1.7. Entrance area on the ground floor

The entrance area after the hinged glass door is threshold-free. There is no tactile floor information. Access to the stairs and lift is on the right after 8.7 metres. There is a 10 cm high threshold in the stairwell entrance area. If you need a mobile ramp, please notify reception by calling +43 1 53408-0. Attention: Do not proceed straight ahead into the courtyard. There is no entrance there.



Figure 5: Threshold in the entrance area at Universitätsstraße 5

### 1.7.1. Access to the stairwell to the mezzanine floor and 1<sup>st</sup> floor

You enter the stairwell through a wooden and glass door. This hinged door is 1.6 m wide. It opens outwards.

#### 1.7.1.1. Data regarding the hinged double door



Figure 6: Access to the stairwell in Universitätsstraße 5

Door width when open: 1 m 56 cm

Door width when half open: 1 m 13 cm

After entering the door the stairs are located to the left. These lead to the mezzanine floor and the first floor.

### 1.7.2. Access to the lift to the mezzanine floor and the 1<sup>st</sup> floor

To get to the lift first walk 3 metres straight ahead and then turn left and walk 10 metres down the corridor to the end. The lift is then on your right. It is non-accessible.

Straight ahead the corridor narrows to a width of 1.2 m.



Figure 7: Narrow section of the corridor on the way to the lift in Universitätsstraße 5

#### 1.7.2.1. Data regarding the non-accessible lift

##### **Outside:**

Height of the call button for the non-accessible lift on the left: 1 m 10 cm. Sliding doors that open automatically: width: 85 cm

##### **Cabin interior:**

Height of push button for 1<sup>st</sup> floor: 1 m 2 cm

Width: 88 cm

Depth: 1 m 96 cm

The OeAD offices are located on the mezzanine floor and the first floor. To get to the mezzanine floor press the H button in the lift. Please note: there is no OeAD sign (see Figure 8). To get to the first floor press the button 1 (there is an OeAD sign).

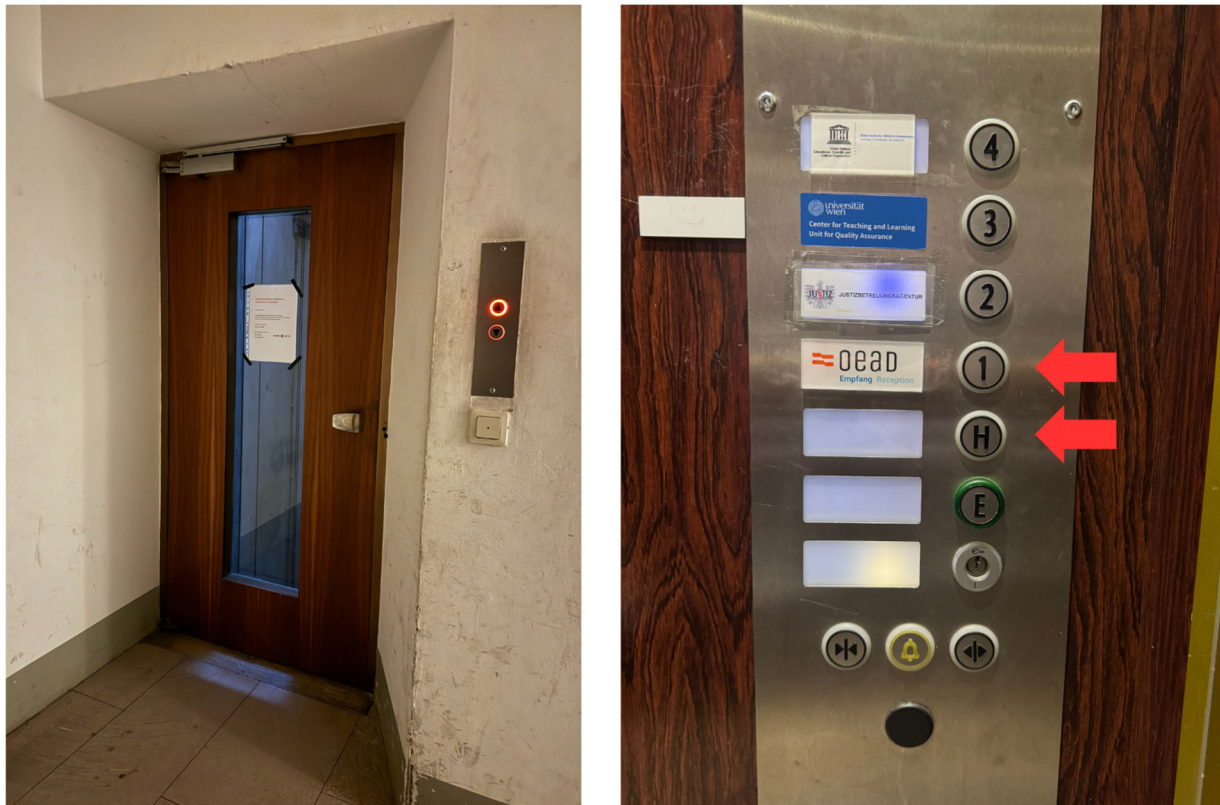


Figure 8: Lift and control panel at Universitätsstraße 5

## 1.8. Mezzanine floor with gallery and toilet

### 1.8.1. What can you find on the mezzanine floor?

- Gallery
- Non-accessible toilet

If you used the stairs the door to the mezzanine floor is on your right. If you used the lift walk 2.6 metres to the left. Go through the hinged wooden door. You have to open the door manually; it opens outwards.

#### 1.8.1.1. Data regarding the door

Door width when open: 1 metre 56 centimetres

Door width when half open: 1 metre 13 centimetres

The wooden door opens manually outwards towards the stairwell. The door opens 90 degrees outwards. If you need assistance, please contact the reception staff.

There are no tactile floor information or attention fields in front of the doors.





Figure 9: Hinged door leading to the gallery on the mezzanine floor and doorbell

To the left of the door there is a doorbell at a height of 1.3 metres. Moreover, the numbers listed on the sheet of paper below it can be reached via the telephone, which is located at a height of 1.3 m.

The reception desk of the OeAD building at Universitätsstraße 5 is staffed Mondays to Fridays from 8 a.m. to 12 noon. Should you require assistance outside these hours please contact the reception desk of the OeAD building at Ebendorferstraße 7. The central reception desk of the OeAD building at Ebendorferstraße 7 is staffed Mondays to Thursdays from 8 a.m. to 5 p.m. and on Fridays from 8 a.m. to 4 p.m. It can be reached by telephone (call +43 1 53408-0) and offers assistance with entering and leaving the building.



## 1.8.2. Gallery

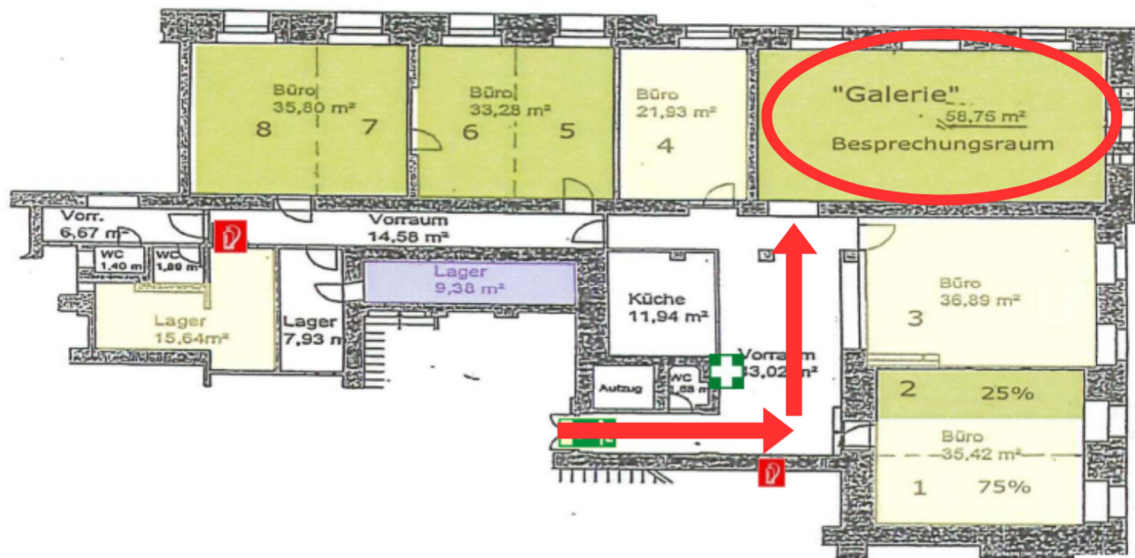


Figure 10: Floor plan, Universitätsstraße 5, mezzanine floor: gallery

After passing through the entrance door walk straight ahead for 5 metres. Then turn left and walk another 8 metres to reach the gallery.

### 1.8.2.1. Information about the door to the gallery

Door width when open: 1 metre 56 centimetres

Door width when half open: 1 m 13 cm



Figure 11: Door to the gallery, mezzanine floor, Universitätsstraße 5

The seating in the gallery is adjustable. The chairs are equipped with backrests. The desks are wheelchair accessible. The room is equipped with power sockets.



Figure 12: Gallery on the mezzanine floor at Universitätsstraße 5





#### **1.8.3.1. Data regarding the door to the toilet on the mezzanine floor**

Door width when open: 1 m 56 cm

The door can be opened 90 degrees inwards.

#### **1.8.3.2. Data regarding the toilet on the mezzanine floor**

Depth of the toilet seat: 45/69 cm

Height of the toilet seat: 47 cm

### **1.9. First floor with reception, library and non-accessible toilet**

#### **1.9.1. What can be found on the first floor**

- Reception
- Library
- Non-accessible toilet

If you used the stairs, the door to the rooms on the first floor is to your left. If you used the lift, walk 2.5 m to the left. Go through the hinged wooden door.

##### **1.9.1.1. Information about the hinged door**

Door width when open: 1 m 56 cm

Door width when half open: 1 m 13 cm

The wooden door can be opened manually outwards towards the stairwell. The door opens 90 degrees outwards. If you need assistance, please contact the reception staff.

There are no tactile floor information or attention fields in front of the doors.

You can reach the numbers to the right of the telephone by using the telephone, which is located at a height of 1.4 m.



Figure 15: Door to reception and library on the first floor

### 1.9.2. Reception on the first floor

The reception desk of the OeAD building in Universitätsstraße 5 is staffed Mondays to Fridays from 8 a.m. to 12 noon. Should you need assistance outside these hours please contact the reception desk of the OeAD building in Ebendorferstraße 7. The central reception desk of the OeAD building in Ebendorferstraße 7 is staffed Mondays to Thursdays from 8 a.m. to 5 p.m. and on Fridays from 8 a.m. to 4 p.m. It can be reached by telephone at +43 1 53408-0 and offers assistance with entering and leaving the building.



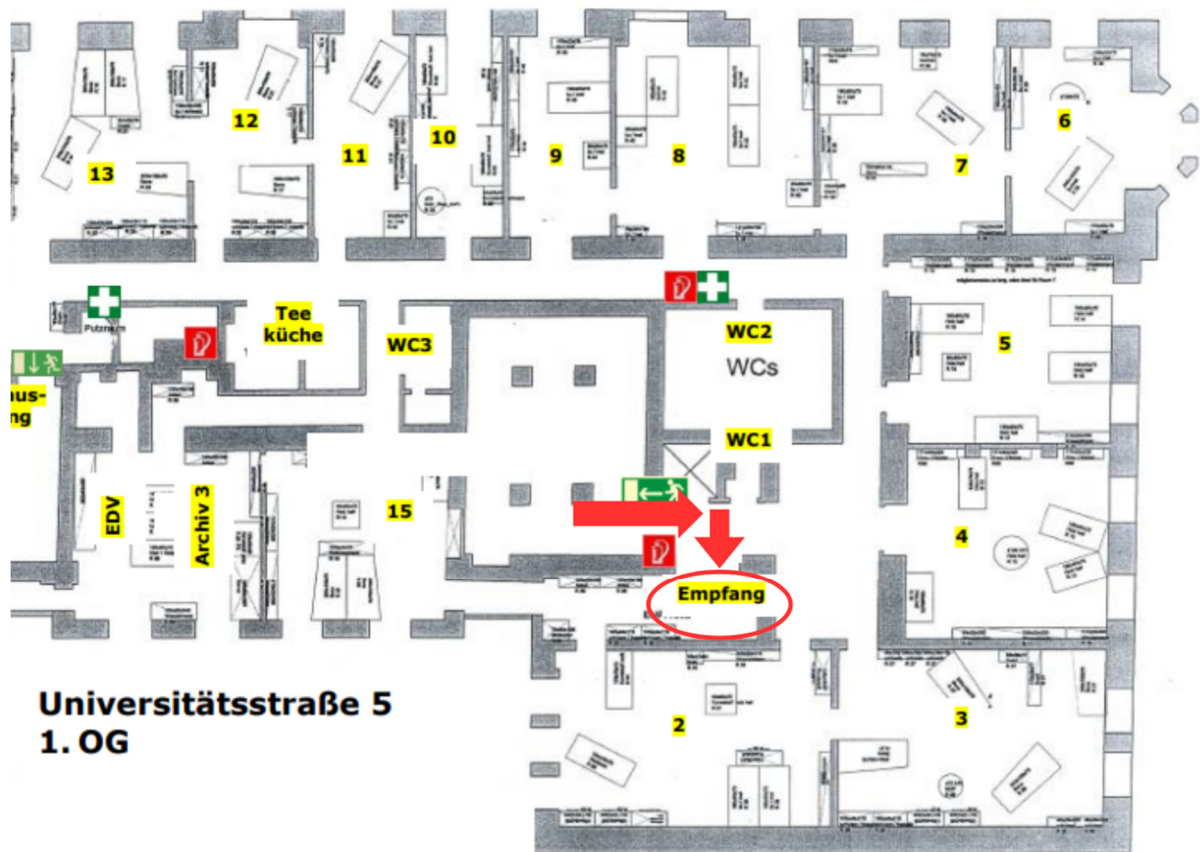


Figure 16: Floor plan of Universitätsstraße 5, 1<sup>st</sup> floor: Reception

After passing through the entrance door you will see the reception desk on the right. Please report to the reception.

### 1.9.3. Library on the 1<sup>st</sup> floor

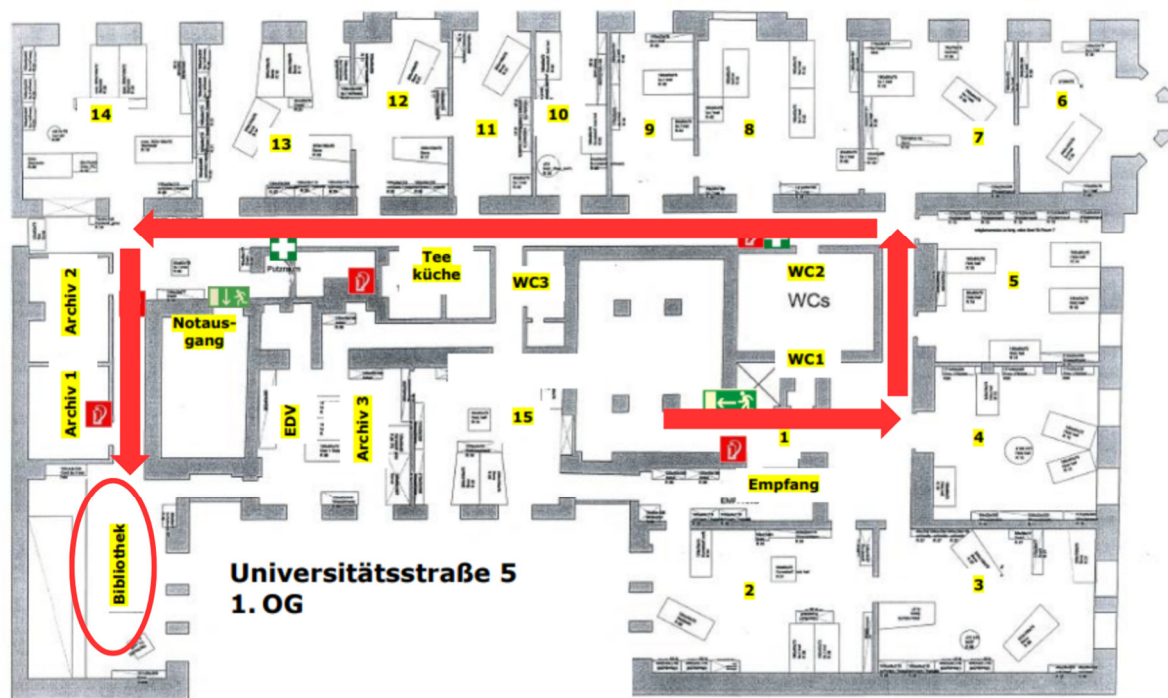


Figure 17: Floor plan of Universitätsstraße 5, 1<sup>st</sup> floor: Library

After the reception the corridor to the library begins. Turn left at the end of the corridor. After about 7.5 metres turn left again at the end of this corridor. Follow the corridor for 25 metres and then turn left. At this point the corridor narrows. The narrowest part is 1.10 metres wide. The library is located at the end of the corridor, 8.3 metres away.

The entrance door to the library is 80 cm wide.

The seating is adjustable. The chairs are equipped with backrests. The tables are wheelchair accessible. The room is equipped with power sockets.

### 1.9.4. Toilet on the 1<sup>st</sup> floor

There are no accessible toilets in the OeAD building at Universitätsstraße 5.

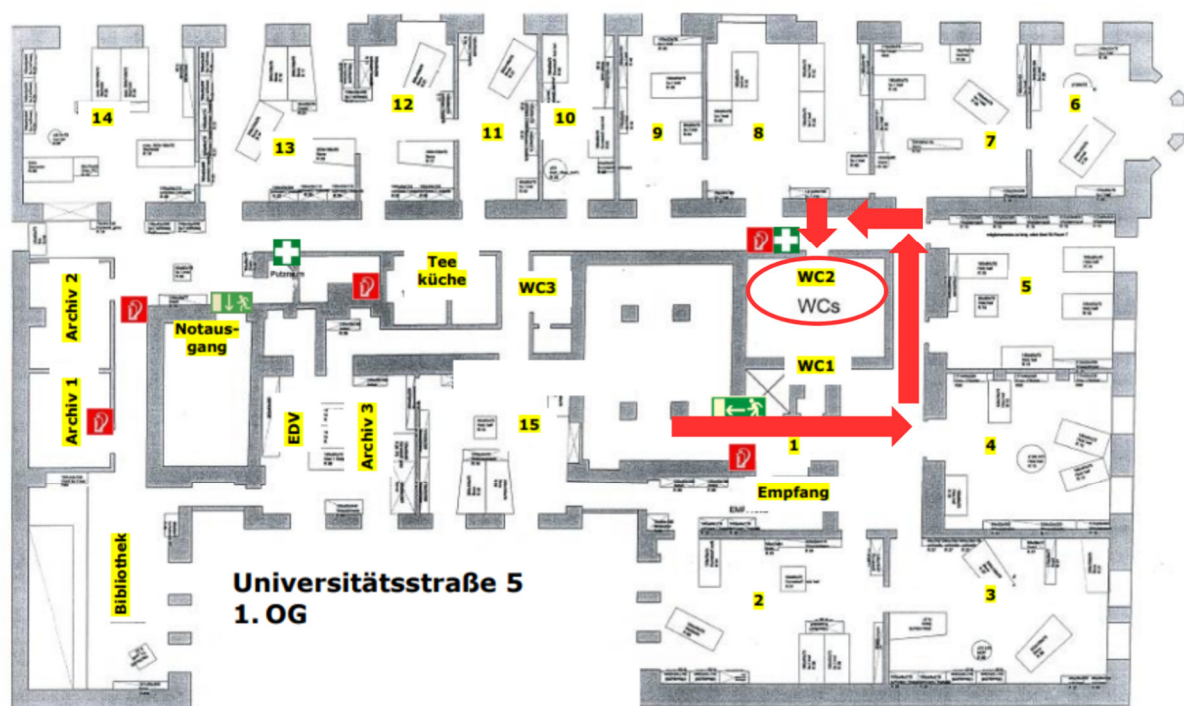


Figure 18: Floor plan of Universitätsstraße 5, 1<sup>st</sup> floor, non-accessible toilet

To get to the toilet turn left at the end of the corridor after the reception. Follow this corridor to the end and turn left. After 3.5 metres you will find the toilet on your left.

You enter the toilet through a hinged door that opens inward and must be opened manually.

Door width when open: 1 m 56 cm

There are two toilets in front of you. Both have hinged doors that open outwards and must be opened manually.

Door width when open: 1 m 56 cm

There are two washbasins to your right. The corridor to the washbasins is 1.2 m wide.



Figure 19: Non-accessible toilet in Universitätsstraße 5, 1<sup>st</sup> floor

#### 1.9.4.1. Data regarding the non-accessible toilet on the first floor

Depth of the toilet seat: 45/69 cm

Height of the toilet seat: 47 cm

Toilet accessible by wheelchair from the left side.

### 1.10. Escape routes

There is an escape route plan in the building. There are signs indicating the fire extinguishers and the escape routes are marked with green illuminated signs.

### 1.11. Additional information

Assistance dogs are permitted.

Unfortunately we do not have any staff who speak Austrian sign language.

### 1.12. Details

The Access Statement was created on 4 July 2023 and reviewed by Peter Gaunerstorfer and Ursula Hilmar on 5 September 2024.

Further update on 30 July 2024 by Philipp Häuser and Valentin Minas.