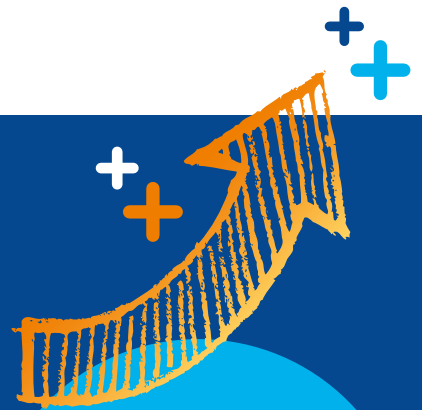




Erasmus Charter for Higher Education (ECHE): Make It Work for you!



It aims at supporting Higher Education Institutions in evaluating their own performance in respecting and implementing the ECHE principles. This exercise is entirely voluntary and confidential.

What is the Erasmus Charter for Higher Education (ECHE) self-assessment?

The ECHE self-assessment was developed by Higher Education Institutions and experts in the field in close cooperation with the European Commission's Directorate-General for Education, Youth, Sport and Culture.

Who developed the ECHE self-assessment?

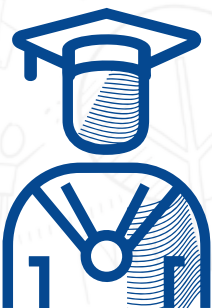
Why should I take the ECHE self-assessment?

If you would like to have a comprehensive yet simple overview of how well your Higher Education Institution implements the Charter's principles, this exercise will do exactly that!

- The self-assessment will generate a user-friendly report to help you find out which areas need to be strengthened and how they can be strengthened, thanks to guidelines and inspiring case studies from other Higher Education Institutions.
- The assessment also provides tailored suggestions on how to further improve your institution's performance in applying the ECHE.

The ECHE self-assessment is targeted at rectors, vice rectors/chancellors, deans, international relations officers and Erasmus+ coordinators from Higher Education Institutions participating in the Erasmus+ programme.

Who is the ECHE self-assessment for?





How does the ECHE self-assessment work?

Two online assessments have been specifically designed for:

- **Rectors and vice rectors/chancellors** to know how well their Higher Education Institution implements the expectations of the Charter. This assessment only takes 10 minutes to complete.
- **International relations officers and Erasmus+ coordinators** to get an in-depth view of their Higher Education Institution's performance in managing Erasmus+ activities. This assessment takes 40 minutes to complete.

- The self-assessment is entirely voluntary.
- The results are confidential and will only be visible to you. Neither the European Commission nor your Erasmus+ Agencies will have access to your results, unless you decide to share them.

Is the self-assessment voluntary and are the results confidential?

It is available for you to use and re-use annually, or whenever you need it to monitor progress in implementing the Charter.

How often can I take the ECHE self-assessment?

How do I take the ECHE self-assessment?

- It's easy, just go to the Erasmus+ website (ec.europa.eu/programmes/erasmus-plus/eche), sign in with your EU login and get started!

